

Building Bridges
Connecting Communities



The Greater Lowell
Community Foundation



Report to the Community April 2000 – November 2001

Table of Contents

WELCOME

What is the Greater Lowell Community Foundation?	2
Why Use the Community Foundation?	3
Ways to Give	4
Giving Now or Planning Your Gift for Later	5
How to Design Your Own Fund	6
Getting Started	7
Greater Lowell Community Foundation Funds	
Lowell High Scholarship Funds and Prizes	8
Agency Funds	9
Field of Interest Funds	9
Designated and Hybrid Funds	9
Donor Advised Funds	10
Greater Lowell Community Foundation Grants	
Capacity Grants 2000	11
Capacity Grants 2001	12
Contributions from Donor Advised Funds	14
How to Apply for a Grant	14
A Catalyst for Change, Community Service, Environmental	
Leadership and Civic Engagement	15
Greater Lowell Community Foundation	
Key Participants	17
Charter Members	18
Financial Profiles	20

Cover: Bridge at the Millpond Falls, North Billerica
(Photo courtesy of Billerica Historical Society)

At Right: Routes 495, 3 and the Lowell Connector
(Photo courtesy of Northern Middlesex Council of Governments)

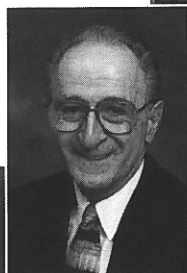
"Report to the Community" designed by Quintessential Design



Welcome Message from the President and Executive Director



Peter S. Stamas,
Treasurer



Luis Pedroso



Chester Atkins



Chanrithy R. Uong

Building Bridges - Connecting Communities

The theme of this year's report represents our efforts to span twenty communities in the northern Middlesex county, to build a cohesive service delivery area and to bridge the region's many populations, charitable interests, and needs with a new source of material support and program innovation.

Every bridge and foundation has to be grounded in at least one place, the deeper the better. However, the broader its reach, the stronger its footings need to be. In 2000 and 2001, the constructive work to build the Community Foundation has been focused on firming its community foothold with additional endowment assets, now fixed for future growth at \$5 million dollars. We have also broadened our reach with ninety permanent endowment funds touching many thousands of people through support of scores of nonprofit agencies serving the region's social, service, community health, cultural, environmental, recreational and educational needs.



Board of Directors of the Greater Lowell Community Foundation
Standing L to R: George L. Duncan; Winslow H. Duke; Richard K. Donahue, Sr., President; John E. Leggat, Vice President; David Kronberg, Executive Director; Arnold S. Lerner; Seated: Kay Doyle, Ph.D.; Brenda Costello, Clerk; Mary Jo Leahey; Carol Amick

Since 1998, the Foundation has awarded over \$700,000 in scholarships to high school students, competitive grants to strengthen the organizational capacity of eighty-five nonprofit agencies, and endowment distributions supporting dozens of charities chosen by donors. The Community Foundation has convened conferences on childhood asthma and community philanthropy, and is leading a community-wide effort to facilitate the economic and civic integration of refugee and immigrant populations in Lowell.

Many of our endowment funds, while newly established over the last three years, nevertheless hold profoundly strong connections that are rooted in the region's history, and that bring to life and propel into the future the exemplary spiritual and charitable purposes of many people who lived during the last two centuries.

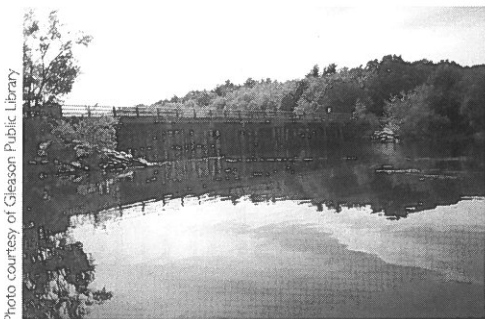
Our endowment funds honor the lives and memory of people whose charitable work and civic commitments form their personal bridge to the future of our community. We invite you to review this document not just as a report of our recent activities. Please use this report as your own personal guide. View our component funds as ways that you, your family and friends can design your endowment legacy to build your own service-bridge to others in our community and for all time. We invite you to build that bridge with us, to improve our present and transform our future with your own ideals, values, honor, goodness, and generosity.

This report is dedicated to the hundreds of people past and present who have committed their lives to helping others, and especially to the many volunteers and contributors who have helped the Community Foundation become the key span that links us together like never before.

Richard K. Donahue,
Sr., President

David Kronberg,
Executive Director

Ways to Give



Bridge over the Concord River connecting
Bedford and Carlisle

Your gift to the Greater Lowell Community Foundation can take a variety of forms.

We can assist you in choosing among the ways you may want to give.

◆ **Cash:**

The simplest gift is often cash or a check.

◆ **Appreciated Securities and Closely Held Stock:**

A gift of appreciated stock receives an income tax deduction equal to its current market value, and there is no capital gains tax when stock is transferred.

◆ **Bequests:**

One of the simplest ways to make a planned gift is to incorporate a statement in your will that a share of your estate, after providing for family and loved ones, shall be distributed to the Community Foundation for the purpose that you name.

◆ **Real Estate:**

A gift of real estate can provide the perfect opportunity to make a substantial gift. Donors continue to use the property throughout their life through a Retained Life Estate. *(see next section on planning your gift for later)*

◆ **Life Insurance:**

By assigning a life insurance policy to the Community Foundation as

owner and beneficiary, a donor's premiums are tax-deductible. When the policy is redeemed, a permanent fund is created to support the charitable goals described by the donor.

◆ **Assets of a Private Foundation:**

When merging into a Community Foundation donor advised fund or supporting organization, family foundations can retain all the essential prerogatives of their private foundation while being relieved of regulatory, administrative and excise tax burdens.

◆ **IRAs:**

Naming the Community Foundation as the beneficiary of an Individual Retirement Account can be a tax-effective contribution that will lessen the impact of income, estate and generation-skipping taxes on a family's inheritance by removing the asset from the donor's estate.

◆ **A Gift from your Company or Corporation:**

Corporate giving endowments and annual charitable projects can be administered through a Community Foundation donor advised fund, providing professional fund management and a positive profile for the company at low cost.

Giving Now or Planning Your Gift for Later



Cider Mill at Stony Brook, Westford Depot

Many people make their gifts in the form of a bequest. However, others prefer the personal satisfaction of establishing a fund now and seeing their charitable dollars at work. We want to assist you as you consider the best way to formulate a charitable fund program that addresses your personal financial situation and takes full advantage of opportunities for income enhancements and tax deductions. Here are examples.

If current income for one or more family members is a concern to you as you formulate your charitable plans, you may be interested in a:

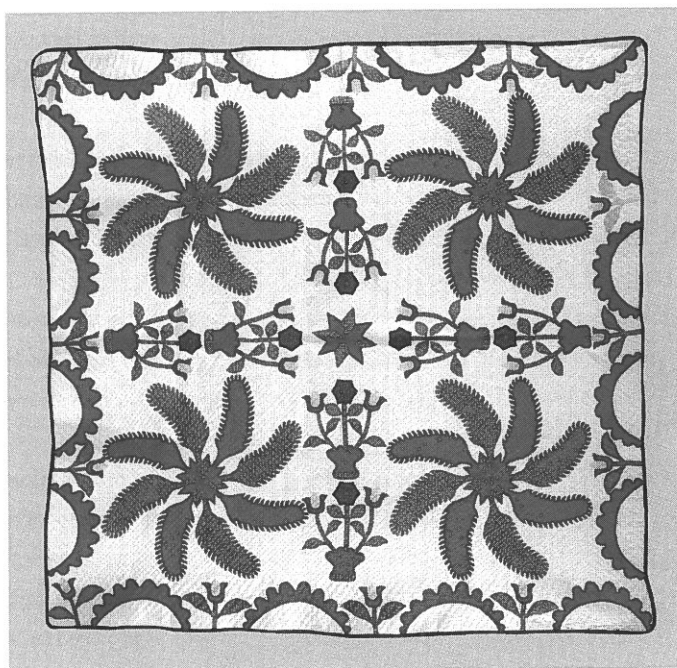
Charitable Remainder Trust: Cash, securities, or other assets are transferred to a trust created by the donor. The trust pays the donor (or other designated beneficiaries) a fixed or variable income for life or a designated period. Upon the deaths of the beneficiaries or conclusion of the payment period, the remainder of the assets is distributed to the

Community Foundation to create a permanent fund or other mechanism to support the charitable purposes stated by the donor. A charitable remainder trust is ideal for those who would like to convert appreciated but low-yielding assets, into substantially increased annual income without incurring capital gains taxes while at the same time minimizing estate taxes for their heirs.

Charitable Gift Annuity: Gift annuities provide a less complicated alternative to remainder trusts, but still allow all donors to enjoy lifetime income, paid quarterly or annually, and tax benefits. A gift annuity at the Community Foundation can be created with a simple contract and a minimum contribution of \$10,000. Unlike a conventional annuity, the donor receives considerable tax advantages, and at the end of the term, the remainder is transferred to the donor's chosen fund at the Community Foundation, which then annually supports the donor's designated charities in perpetuity.

Two separate gift annuities have been established at the Community Foundation to provide lifetime income after which the remainder of the annuity will benefit the New England Quilt Museum Endowment Fund.

One annuity beneficiary recently stated, "I'm a big fan of gift annuities because they give me a quarterly check to augment income, earn a terrific tax deduction, and later support the museum endowment with the funds that are left. It's my way to forever support the rich traditions that quilting embody by supporting a first-rate Museum that celebrates it every day."



Elliot Kaplan/Avid Scholarship Fund

A media studies scholarship fund established by Avid Technologies, Inc. in memory of Elliot Kaplan, one of its employees, to award scholarships at Lowell and Brookline High Schools and to support the Boston Film Video Foundation.

Kathryn Stoklosa Knowledge Bowl Fund*

An endowment to provide permanent funding for the Kathryn Stoklosa Knowledge Bowl, an academic competition for middle school students.

Kittredge Park Fund

A designated fund to supplement annual landscaping and maintenance for Kittredge Park in Lowell.

Lowell Latin Lyceum Association Fund*

A permanent endowment to support the Lowell Latin Lyceum Association in providing a classically based academic curriculum to gifted students at Lowell High School.

Lowell 200th Anniversary Fund

A fund designated to support the 200th Anniversary celebration of the city of Lowell in the year 2036.

Father Thomas J. Reddy Oblate Mission Guild Fund

A fund established in honor of Father Reddy to provide holiday gifts for economically disadvantaged children.

Zaher-Lacouture-Galotta Family Fund*

A hybrid designated and scholarship fund set up to support Lifelinks, Inc., and to provide scholarships to students of Syrian and Lebanese descent.

Donor Advised Funds:**Allan P. MacLean, Jr. Memorial Fund***

A donor-advised fund established by the parents of Allan P. MacLean, Jr. in his memory to support charitable organizations.

The Avid Fund

A corporate donor advised fund created by Avid Technology, Inc. to provide grants to community organizations.

Mary J. Bacigalupo Community Fund*

A donor advised fund to honor Mary J. Bacigalupo's outstanding volunteer contributions to the Lowell community.

Boisvert Fund*

A donor advised fund established by William R. Doyle and Kay Doyle, Ph.D. to honor their family members and to support charitable interests.

Enterprise Bank Community Gifts Fund

A donor advised fund established in celebration of Enterprise Bank's 10th Anniversary to provide charitable gifts in the towns in which the bank operates.

Kronberg Family Fund

Created by the Community Foundation's executive director, the fund will provide an opportunity to award gifts to various nonprofit groups of interest to him, his wife and son.

Ruth C. and John E. Leggat Fund

A combination designated and donor-advised fund which provides annual distributions to nonprofit organizations of interest to the Leggats.

Mayo Fund*

A donor-advised fund to provide scholarships and distributions to nonprofit and civic organizations.

Top of the Hill Fund*

A donor-advised fund to provide funding to organizations that support the charitable interests of the donors.

Discretionary Funds:**Founders Discretionary Fund**

A permanent discretionary fund established with and continually supplemented by contributions from local citizens to provide support to nonprofit organizations for current and emergent needs of the community. The Community Foundation's Organizational Capacity Grant Program supports nonprofit organizations on a competitive basis through recommendations made by the Distribution Committee and the Board of Directors.

Moses Greeley Parker and Mary Greeley Parker Morrison Fund for Greater Lowell

A \$1.5 million discretionary fund established by the Theodore Edson Parker foundation that will be fully funded upon achieving a \$4 million challenge grant comprised of endowed fund contributions from donors to support any charitable purpose. As of the August 2001, 80% of the challenge has been attained. This discretionary fund also currently supports grantmaking to strengthen the organizational capacity of nonprofit organizations.

Deferred Gifts

Three charitable gift annuity contracts now provide lifetime income to donors. The remainder in the gift annuities will benefit the New England Quilt Museum Endowment Fund upon the death of the individuals.

Greater Lowell Community Foundation Grants

Capacity Grants 2000

Acre Family Day Care - \$3,000 to create a program manual and child care provider handbook, and update its handbooks for employees and parents.

American Textile History Museum - \$3,000 to expand its volunteer program and to initiate a collaboration with other institutions with similar needs.

Boys and Girls Club of Greater Lowell - \$1,500 for training to strengthen program and staff development, fundraising and financial management.

Cambodian American League of Lowell - \$3,000 to develop a long-term strategic plan for the organization.

Cambodian Mutual Assistance Association - \$3,000 to train staff on supervision, financial management, budgeting, human resource management, outreach and case management.

Grandparents as Parents / Catholic Charities Parish Social Ministries - \$3,000 to create a computerized referral system for GAP Families in the Greater Lowell area.

Chelmsford Community Exchange - \$2,260 for computer, software and Internet connection.

Children's Museum Lowell - \$3,000 to provide membership development and financial/information management training.

Coalition for a Better Acre - \$3,000 to develop a long-term strategic plan for the organization.

Corporation for the Celebration of Jack Kerouac in Lowell - \$3,000 to conduct a membership-fundraising campaign using its 1500 person mailing list.

Friends of the Cameron Senior Center - \$1,200 to hire an individual to contact in person or by telephone each elder householder, age 70 and over about available services.

International Institute of Lowell - \$3,000 for a consultant to redefine its business plan, assess its administrative structure and explore possible program expansion.

Kiwanis Club Foundation of Greater Lowell - \$2,100 to prepare an event production handbook to sustain this community funding project.

Lifelinks - \$2,955 for a database system to house medical, emergency, diagnostic and other information to streamline program and administrative management.

Lowell Association for the Blind - \$2,700 for a Board of Directors retreat, strategic plan, and staff training.

Lowell Office of Cultural Affairs - \$2,780 for website design and site management to showcase the area's cultural activities.

Lowell Parks & Conservation Trust - \$2,750 to develop a web site to increase organizational capacity through on-line membership and program marketing.

Greater Lowell Family Resource Center of the Massachusetts Society for the Prevention of Cruelty to Children - \$2,900 to assist in the expansion and stabilization of a Parent Advisory Group for the Resource Center.

Merrimack Repertory Theatre - \$3,000 to upgrade its box office ticketing software to a level more compatible to a theatre of its size.

Merrimack Valley Housing Partnership - \$1,000, for staff training in community building and neighborhood revitalization to increase affordable housing.

Middlesex Canal Association Museum - \$2,500 to increase skills in the areas of management, legal procedures, collection care, and fund raising.



New homeowners thanks
to the Merrimack Valley
Housing Partnership

Middlesex Canal Association, Museum Committee -

\$1,200 to purchase software to automate fully the Museum's collection information.

Middlesex North Resource Center - \$3,000 to upgrade server and memory in computer system to accommodate new e-mail and billing software.

Nashua River Watershed Association - \$2,940 to conduct a membership campaign in the towns of Ashby and Groton.

New England Quilt Museum - \$3,000 to upgrade the Museum's computers, software, networking and e-mail capabilities, and website.

Rape Crisis Services of Greater Lowell - \$2,500 to replace two outdated computers and provide technical support, thus enabling them to run advanced software with networking capabilities.

SuAsCo Watershed Community Council - \$3,000 to hire a consulting firm to guide the Council through a strategic planning process.

Townsend Massachusetts Historical Society - \$3,000 to hire a planning consultant to assist the Board in creating a strategic plan.

United Teen Equality Center - \$3,000 to fund the Teen Management Training Program, enhancing the involvement of teens in the administration and program management of the Center.

Visiting Nurse Association of Greater Lowell - \$1,500 to create and translate a booklet to facilitate communication between clinicians and non-English speaking patients.

Whistler House Museum of Art - \$3,000 to purchase and install a new multi-line telephone and communication system.

Wilmington Educational Foundation - \$1,100 for publishing supplies to reach potential donors more effectively.

YWCA of Lowell - \$3,000 to purchase management information system hardware and software to assist in fundraising.

Contributions From Donor Advised Funds

In 2000 and 2001, the following organizations received gifts from the Community Foundation's Donor Advised Funds:

Academy of Notre Dame
American Friends Service Committee
Amnesty International USA
Andover Village Improvement Society
Appalachian Mountain Club
Back Central Neighborhood Association
The Carter Center
Catholic Relief Services
Children's Museum Lowell
Community Legal Services & Counseling Center
Emerson College Annual Fund
Florence Crittenton League
Genesee Valley Conservancy
Girls, Inc.
Greater Lowell Business Education Collaborative
House of Hope
Kirkridge Retreat Center
The Lindesmith Center-Drug Policy Foundation
Lowell General Hospital Cancer Center Endowment
Meridian International Center
Merrimack Repertory Theatre
Merrimack Valley Housing Partnership
Nature Conservancy
Northern Outdoor Leadership Schools (NOLS)
The Open Pantry of Greater Lowell
Oxfam America
Planned Parenthood Federation of America
Planned Parenthood League of Massachusetts
Restore the North Woods
Trustees of Reservations
United Way of Merrimack Valley
Visiting Nurse Association of Greater Lowell
WBUR
WGBH
Whistler House Museum
Windrush Farm Therapeutic Equitation

How to Apply for a Grant

Nonprofit organizations and civic activities must meet eligibility criteria in order to apply for discretionary grants and special initiative programs. Requests to be put on our mailing list can be sent by e-mail, fax or phone. The application form and grant criteria are also available directly on our website:

www.glcfoundation.org

A Catalyst for Change, Community Service, Environmental Leadership and Civic Engagement

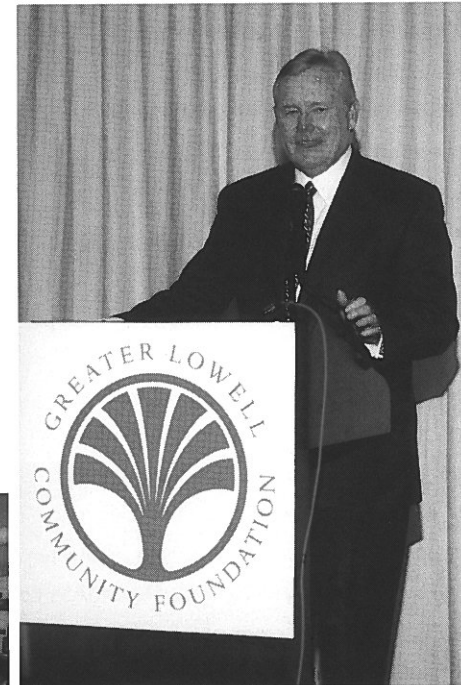
In 2000 and 2001 the Greater Lowell Community Foundation served a multi-faceted role as convener, facilitator, coordinator and leader of four projects that have addressed critically important concerns in our region. In the process, the Community Foundation attracted outside funds to enrich our community and address its needs, brought nationally renown and local experts together to work with community residents and civic leaders on community health and philanthropic issues and provided fiscal agency and brought together a coalition of multiethnic organizations in a successful effort to win a prestigious grant from the National Conference of State Legislatures to assist Lowell's immigrant communities.

Philanthropy Day

A true test of the community is its ability to span the gaps between its citizens. The theme for 2001's Fifth Annual Philanthropy Day was "Philanthropy in Action: Building Bridges-Connecting Communities," and the event was attended by over 200 representatives of a wide array of nonprofit organizations in the Greater Lowell region. Philanthropy Day gave nonprofit leaders in the Greater Lowell area an opportunity to trade ideas and network among themselves to understand shared

problems and concerns. Recipients of 2000 grant awards displayed exhibits on how these grants were utilized by their organizations during the previous year. Thirty-seven representatives of community and nonprofit organizations received \$100,000 in grant awards at Philanthropy Day.

Philanthropy Day's keynote speaker was WBZ-TV's Jack Williams, whose Wednesday's Child initiative has placed hundreds of special-needs children in adoptive homes.



*Jack Williams, WBZ-TV Anchor,
addresses the attendees at the
Fifth Annual Philanthropy Day
as the keynote speaker.*



Arch Bridge in Dunstable

Photo courtesy of Dunstable Free Public Library

First Annual Volunteer of the Year Awards

The Community Foundation presented its First Annual Volunteer of the Year awards at the 2001 Philanthropy Day. Three volunteers, nominated by their peers, were recognized for their exemplary community service and received \$1,000 to donate to the charities of their choice. Samnang Hor, a student at Lowell High School, donated his award to Big Brother/Big Sister; Susan Leggat, special events coordinator for Lowell National Historical Park, gave hers to the Boys and Girls Club of Greater Lowell; and Robert Pine, President of the Groton Conservation Trust, donated his award to a project preserving the Squannacook and Nissitissit watersheds.



The winners of the First Annual Volunteer of Year awards
(from left) Robert Pine, Samnang Hor, Susan Leggat.

Taking Action on Childhood Asthma

Following its sponsorship of a successful childhood asthma conference in 1999, The Community Foundation secured additional funding from the Robert Wood Johnson Foundation to implement the projects formulated by this conference. The newly established Asthma Awareness Coalition of Greater Lowell, through a grant subcontract awarded to UMASS Lowell's Center for Family, Work and Community, has undertaken steps to educate the community about the disease, to provide access to treatments, and to address the problems associated with addressing these issues in a multicultural and multiethnic community.

Archival Research Study

The Community Foundation, in conjunction with the Lowell National Historical Park, helped secure funding to complete Phase I of a comprehensive plan to expand the Center for

Lowell History. Phase I of the study identified current and future needs for archive and artifact storage and care, and will provide the basis for acquiring and remodeling space in historic mill buildings to accommodate this collection.

Protecting the Concord, Merrimack, and Nashua River Watersheds

In conjunction with the Massachusetts Environmental Trust and dozens of corporate and private contributors, the Community Foundation has created the Northern Middlesex Water Resources Endowment, comprised of three separate watershed endowment funds totaling \$300,000. These endowments will be used to provide competitive grants annually to support projects and programs that address educational, conservation and protection issues directly impacting the Concord, Merrimack, and Nashua River watersheds.

One Lowell: Building A New American Community

In 2001, the Community Foundation was awarded a prestigious grant, one of only three in the nation, from the National Conference of State Legislatures. Over the next two years the project **One Lowell: Building A New American Community** will investigate the extent to which civic engagement of Lowell's refugee and immigrant populations can bring these new American people into the mainstream of our society as active participants in, and future guardians of our local democratic institutions.

The One Lowell Coalition includes the African Assistance Center, Cambodian American League of Lowell, Cambodian Mutual Assistance Association, Community Teamwork Inc.,

Eliot Church, International Institute of Lowell, La Prensa Latina, Lao Family Mutual Association of Lowell, Massachusetts Alliance of Portuguese Speakers, and the University of Massachusetts Lowell Center for Family, Work and Community.

The Wilmer Shields Rich Award

For the third consecutive year, the Council on Foundations awarded the Community Foundation its prestigious Wilmer Shields Rich Award for Excellence in Communications. In 2001, the Community Foundation won a Gold Award for its Web site, following similar recognition for its newsletter and newspaper inserts. "This is our Academy Awards," said Sunshine Janda Overkamp, a vice president at the Washington, D.C.-based Council. "It's not enough to have a nice piece or a nice Web site but you have to distribute it. It can't just be pretty, it has to work." To visit our Website, go to www.glcfoundation.org.

Greater Lowell Community Foundation

Board of Directors

Richard K. Donahue, Sr., President
John E. Leggat, Vice President
Peter S. Stamas, Treasurer
Brenda Costello, Clerk
Carol Amick
Chester Atkins
Kay Doyle, Ph.D.
Winslow H. Duke
George L. Duncan
Mary Jo Leahey
Arnold S. Lerner
Luis Pedroso
Anastasia Sarantos
Chanrithy R. Uong

Distribution Committee

Marie Sweeney, Chairman
Peter Aucella
Brenda Bond
Frank Carvalho
Elizabeth Coughlin
Mary Ellen Fitzpatrick
Pauline Golec
Ellen Harde
Bill Hardy
Wayne Hayes
Janet Leggat
David W. Malone
Connie Martin
Martha Mayo
Gail Poulten
Peggy Shepard
Bob Shevlin
Mary Ann Simensen
Rithy Uong
Jose Vasquez
Kenneth Wingood

Philanthropy Day Planning Committee

Kay Doyle, Ph.D., Chairman
Mehmed Ali
Noralee Barbieri
Sandra Bazza

Curtis B. Barton
James L. Canavan
Karen H. Carpenter
Linda Chemaly
Maria Cuesta Ed. D
Brenda Costello
Yvonne La-Garde
Stephen L. Gervais
Carolyn D. Hubers
Nancy Kleniewski Ph.D.
Janet C. Leggat
William F. Lipchitz
Connie Martin
Marjorie McDermott
David W. Malone
Leslie Morin
Cecilia N. Okafor
Kathleen Petruzzello
Sharon Shelton
Peggy Shepard
Lura Smith
Peter S. Stamas
Marie Sweeney
Chethaketo Tan
Germaine Vigeant-Trudel
Kenneth Wingood

Volunteer Awards Committee

Mehmed Ali, Co-chairman
Nancy Kleniewski Ph.D., Co-chairman
Linda Chemaly
Marie Sweeney
Charlene Torla

Professional Advisory Committee

George B. Leahey Esq., Chairman
Edward H. Adamsky Esq.
Arthur L. Eno Jr., Esq.
Marshall L. Field, Esq.
Arthur V. Ford, CPA
W. Neil Hurley Esq.
John E. Leggat Esq.
Robert C. Mongeau, C.L.U.
Annmarie Roark, Esq.
Brian J. Stafford, CPA

Editorial Committee

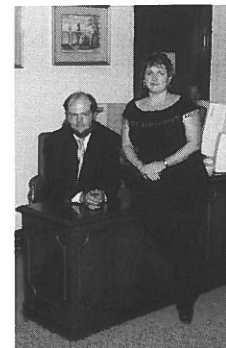
Mehmed Ali
Mary Bacigalupo
Lee Barbieri
Marie Sweeney

Investment Committee

Winslow H. Duke
John E. Leggat
Luis Pedroso
Peter S. Stamas

Staff

David Kronberg,
Executive Director
and liaison to all
committees
(pictured on pg.2)
Janinne Nocco,
Office Manager
(pictured right)
Bruce Leggat,
Office Assistant
(pictured left)



Thanks to the followings Supporters

Anonymous Fund
Associated Grantmakers of Massachusetts
Chance Briggs
Brighter Design
Dr. John Burke
Butler Bank
Chronicle of Philanthropy
City of Lowell
Community Teamwork, Inc.
Compaq Computer Corporation
Cooney Development
Brenda and John Costello
Council on Foundations
Creative Office Pavilion
Jessie B. Cox Charitable Trust
Joseph P. and Eileen M. Donahue

Charitable Foundation
Richard K. and Nancy L. Donahue Sr.
William R. and Kay Doyle
Winslow and Pauline Duke
Edge Group, Inc.
Elder Services of Merrimack Valley, Inc.
Eno, Boulay and Martin, LLP
Enterprise Bank and Trust Company
FirstMass a Bank North Company
Aubert J. Fay Charitable Trust
Fidelity Foundation
Fleet Asset Management
Higgins and Ross Design
Human Services Corporation
Kelly Foundation
Kevin Harkins Photography
KeySpan Energy Delivery
John E. and Ruth C. Leggat
Arnold S. and Maureen Lerner
LifeLinks, Inc.
Agnes M. Lindsay Trust
Lowell Development and Financial Corporation
Lowell General Hospital
Lowell Plan
Lowell School Department/Lowell High School
Massachusetts Electric
Massachusetts Environmental Trust
Merrimack Valley Estate Planning Council
M.H. McDonough and Sons, Inc.
Middlesex Community College
National Conference of State Legislatures
Retarded Adults Rehabilitation Association
Quintessential Design
Paul J. Scalera Photography
Anastasia Sarantos
Stafford, Gaudet and Associates
Peter S. Stamas
State Street Bank Foundation
The Stevens Foundation
Sullivan Brothers Printers
Dr. William and Marie Sweeney
Theodore Edson Parker Foundation
Trinity EMS, Inc.
University of Massachusetts Lowell
Whitestone and Donald, P.C.
Robert Wood Johnson Foundation



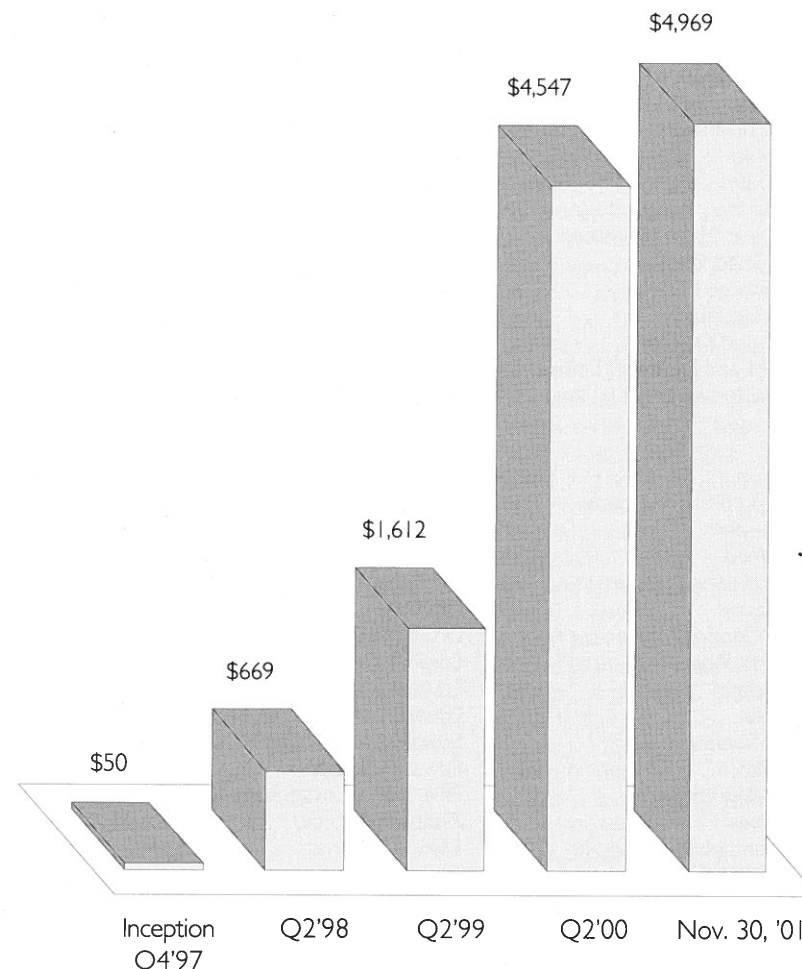
Financial Profiles

CONDENSED FINANCIAL STATEMENTS

	March 31, 1999	March 31, 2000	March 31, 2001
Assets:			
Cash and Cash Equivalents	\$122,554	\$127,233	\$115,331
Investments	1,237,766	4,669,857	4,417,679
Unconditional Promises to Give	208,219	132,966	62,064
Property and Equipment - Net	0	12,922	38,604
Other Assets	3,816	230	700
Total Assets	\$1,572,355	\$4,943,208	\$4,634,378
Liabilities:			
Accounts Payable	14,646	1,020	7,715
Accrued Expenses	0	4,456	3,881
Charitable Gift Annuities	0	0	10,645
Agency Funds	0	107,921	235,258
Total Liabilities	\$14,646	\$113,397	\$257,499
Net Assets:			
Unrestricted	219,405	168,573	191,794
Temporarily Restricted	1,338,304	4,661,238	4,225,085
Total Net Assets	\$1,557,709	\$4,829,811	\$4,416,879
Total Liabilities and Net Assets	\$1,572,355	\$4,943,208	\$4,634,378
Expenses:			
Grants and Scholarships	106,162	261,536	319,230
Other Programs and General Expenses	157,642	180,778	254,909
Total Expenses	\$263,804	\$442,314	\$574,139

GROWTH OF ASSETS

(In thousands of dollars)

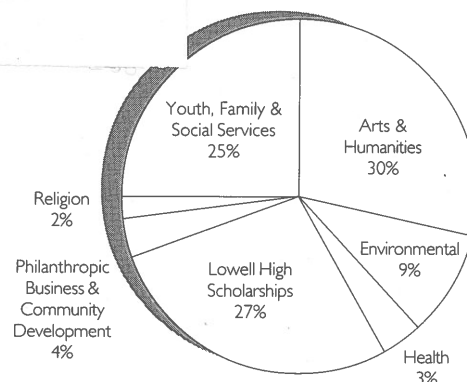
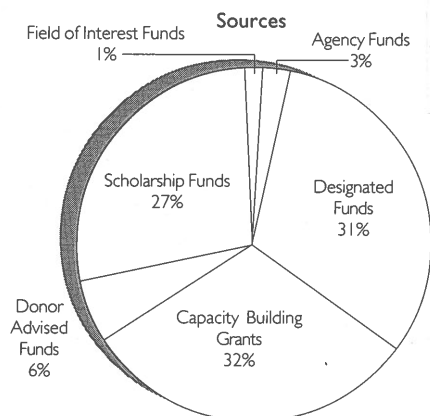


GRANT GIVING

Fiscal Year 2001

\$319,230

Grants Awarded



A complete copy of the Foundation's annual audited financial statements can be obtained from the Foundation office.



This report was published a few weeks after the tragic events of September 11. Since then, two funds have been established. To support the immediate and unmet needs of local families of victims of the four aircraft disasters, Enterprise Bank and Trust Company has established the Enterprise 9-11 Disaster Fund for Local Families. To date, the fund has collected over \$108,000.

In addition, an anonymous donor established the John A. Ogonowski Memorial Fund, a family donor advised fund to support nonprofit activities that inspired John's remarkable generosity as a farmer and community leader in his town of Dracut. John was the pilot of American Airlines Flight 11, which was hijacked and crashed into the first World Trade Center tower.



The Greater Lowell Community Foundation

169 Merrimack Street, 5th Floor

Lowell, Massachusetts 01852-1723

phone: 978-970-1600; fax: 978-970-2444

e-mail: glcf@gis.net

website: glcfoundation.org

Serving:

Ashby
Billerica
Chelmsford
Dunstable
Lowell
Tewksbury
Westford

Ayer
Burlington
Concord
Groton
Pepperell
Townsend
Wilmington

Bedford
Carlisle
Dracut
Littleton
Shirley
Tyngsboro